



# Sample Infant C

12 children 6wks-18 months  
(Approximately 500 sq feet)

Need to customize? Call 800.777.4244 or  
email [Sales@CommunityPlaythings.com](mailto:Sales@CommunityPlaythings.com)

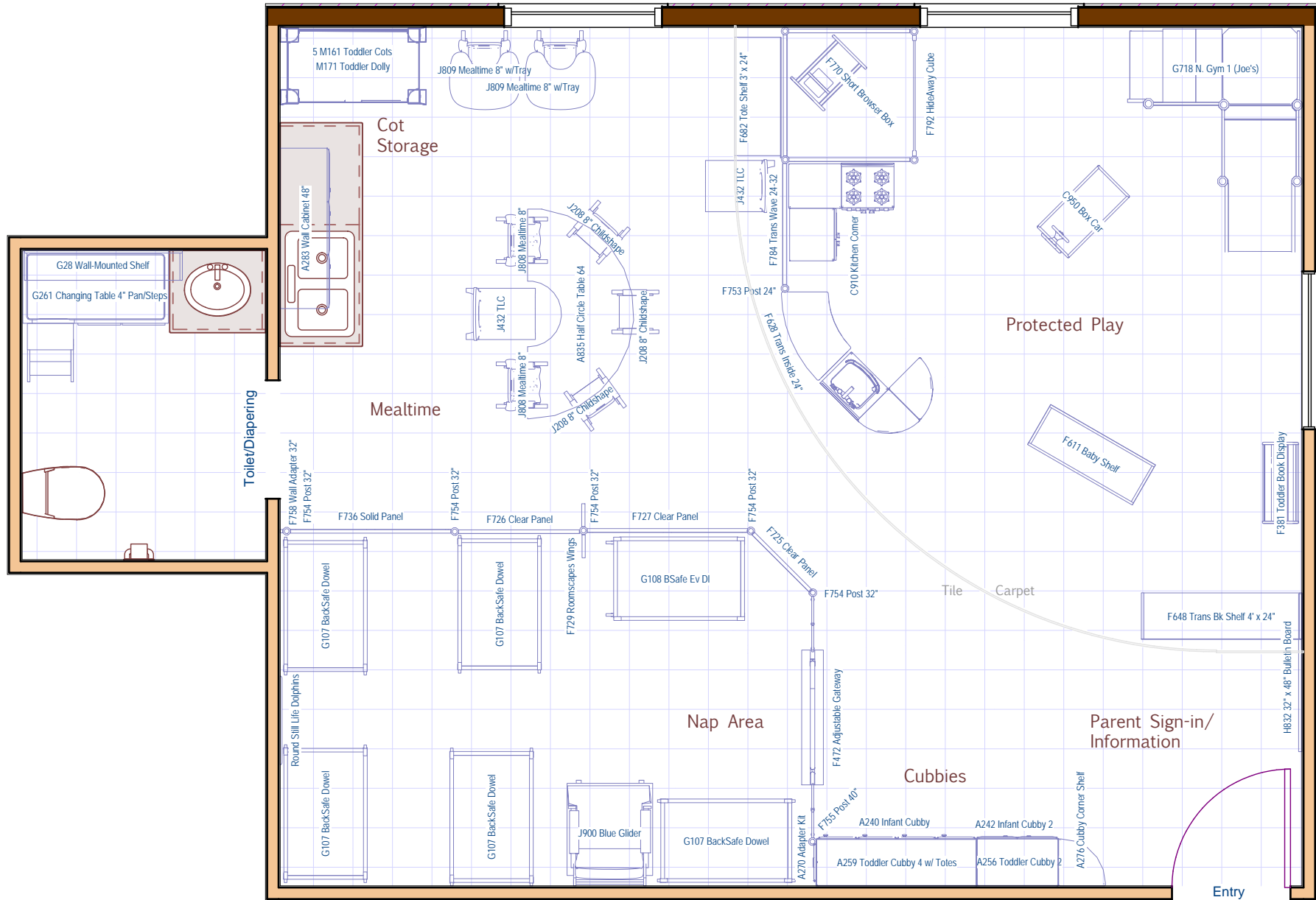




# Sample Infant C

12 children 6wks-18 months  
(Approximately 500 sq feet)

Need to customize? Call 800.777.4244 or  
email Sales@CommunityPlaythings.com





## Sample Infant C

12 children, 6 wks-18 months

Pricing intended for budgeting purposes only. Contact Community Playthings for a formal quote.

Item No.	Description	Qty	Price	Ext. Price
M171	Toddler Cot Dolly	1	\$70.00	\$70.00
M161	Toddler Cot	5	\$60.00	\$300.00
A240	Infant Cubby 4	1	\$795.00	\$795.00
A242	Infant Cubby 2	1	\$450.00	\$450.00
A256	Toddler Cubby 2	1	\$305.00	\$305.00
A259	Toddler Cubby 4 w/ Totes or Baskets	1	\$605.00	\$605.00
A270	Roomscapes Adapter Kit	1	\$55.00	\$55.00
A276	Cubby Corner Shelf	1	\$250.00	\$250.00
A283	Wall-Mounted Cabinet 48"	1	\$560.00	\$560.00
A835	Classroom Half Circle Table 64	1	\$285.00	\$285.00
C910	Kitchen Corner	1	\$970.00	\$970.00
C950	Box Car	1	\$180.00	\$180.00
F381	Toddler Book Display	1	\$190.00	\$190.00
F472	Adjustable Gateway	1	\$525.00	\$525.00
F611	Baby Shelf 3' x 16"	1	\$270.00	\$270.00
F628	Translucent Back Inside Sweep Shelf 24"	1	\$290.00	\$290.00
F648	Translucent Back Shelf 4' x 24"	1	\$395.00	\$395.00
F682	Tote Shelf 3' x 24"	1	\$435.00	\$435.00
F725	Clear Panel 24" x 32"	1	\$94.00	\$94.00
F726	Clear Panel 36" x 32"	1	\$126.00	\$126.00
F727	Clear Panel 48" x 32"	1	\$150.00	\$150.00
F729	Roomscapes Wings	1	\$83.00	\$83.00
F736	Solid Panel 48" x 32"	1	\$150.00	\$150.00
F753	Roomscapes Post 24"	1	\$24.00	\$24.00
F754	Roomscapes Post 32"	5	\$27.00	\$135.00
F755	Roomscapes Post 40"	1	\$33.00	\$33.00
F758	Adapter, Wall, 32"	1	\$35.00	\$35.00
F770	Small Browser Box	1	\$160.00	\$160.00
F784	Translucent Wave Panel 24" to 32"	1	\$146.00	\$146.00
F792	HideAway Cube	1	\$660.00	\$660.00
G257	BackSafe Crib (with Clear View Ends)	5	\$540.00	\$2,700.00
G258	BackSafe Evacuation Crib (with Clear View Ends)	1	\$540.00	\$540.00
G261	Changing Table with steps and 4" Pan	1	\$1,340.00	\$1,340.00
G28	Wall-mounted Shelf	1	\$360.00	\$360.00
G718	Nursery Gym 1 with Ramp	1	\$1,100.00	\$1,100.00
H832	Bulletin Board 32" x 48"	1	\$195.00	\$195.00
J208	Childshape Chair 8"	3	\$72.00	\$216.00
J432	Teacher Chair, 12"	2	\$163.00	\$326.00
J809	Mealtime Chair 8" with Tray	2	\$175.00	\$350.00
J808	Mealtime Chair 8"	2	\$101.00	\$202.00
J900	Community Glider, Blue	1	\$545.00	\$545.00
			<b>Total</b>	<b>\$16,600.00</b>